



WAKEENEY TOURISM INVITES YOU TO
CELEBRATE THE CHRISTMAS CITY OF
THE HIGH PLAINS CELEBRATION OF

LEON DAY

THAT'S NOEL SPELLED BACKWARDS!

25 JUNE

START AT 6:00PM

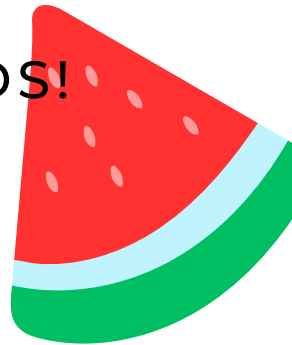
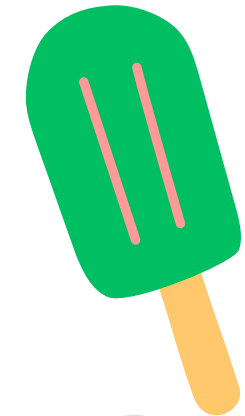
CITY PARK - 6TH & 7TH STREET

BRING YOUR OWN PICNIC
OR THERE WILL BE FOOD
AVAILABLE FOR SALE

SANTA WILL
BE THERE

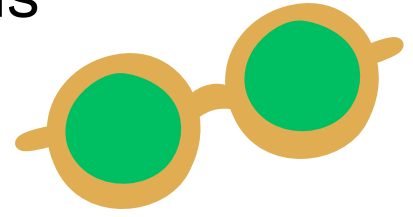
FOR MORE DETAILS - GO TO OUR
FACEBOOK PAGE -
GET WAKEENEY - EVENT LEON DAY

OR CALL WAKEENEY TOURISM
785-743-8325





LEON is NOEL spelled backwards
and falls exactly six months
before Christmas day (Dec 25)
June 25th



So for fun we celebrate a little backwards

Instead of snow - we have sunshine !

Some silly elves wear their clothes backwards or
their sunglasses upside down.

When Santa comes - he won't be bringing you gifts,
you will be bringing him gifts to **help supply the
local food pantry.**

BRING YOUR OWN LAWN CHAIRS
BRING YOUR OWN PICNIC OR BUY FROM A
FOOD VENDOR AT THE PARK

THERE WILL BE FREE GAMES AND
FIND THE PICKLES HUNT WITH PRIZES

JOIN THE LEON DAY COMMUNITY BLOCK
PARTY AT THE CITY PARK -
EVERYONE'S INVITED !

JUNE 25
6:00PM - 9:00PM

